



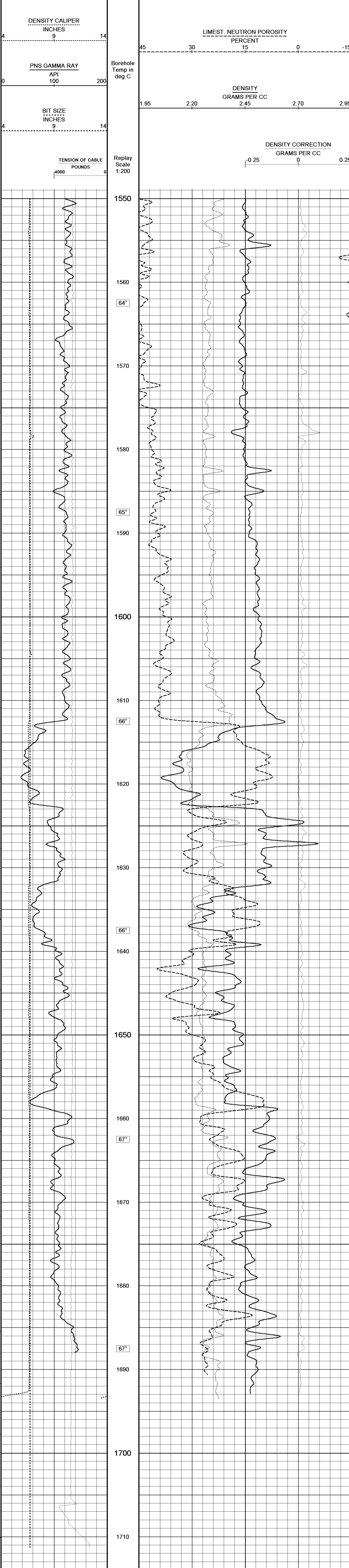
1:200
PDS CNS
GR

COMPANY	SANTOS
WELL	BUTTRISS 1
FIELD	OTWAY
PROVINCE/COUNTY	VICTORIA
COUNTRY/STATE	SANTOS
LOCATION	38DEG 30' 59.4" S, 142DEG 48' 30.7" E
API Number	Permit Number PEP 154
Permanent Datum GL	Elevation 45.80 M metres
Log Measured From RT	4.70 M above Permanent Datum
Drilling Measured From RT	
Date	17-JAN-2002
Run Number	1
Depth Driller	1730.00
Depth Logger	1710.60
First Reading	1709.60
Last Reading	0.00
Casing Driller	378.00
Casing Logger	378.00
Bit Size	6.75
Hole Fluid Type	KCL/POLY
Density / Viscosity	9.30 39.00
PH / Fluid Loss	9.00 8.00
Sample Source	FLOWLINE
Rm @ Measured Temp	0.21 @ 18.6
Rmt @ Measured Temp	0.17 @ 18.8
Rmc @ Measured Temp	0.25 @ 18.4
Source Rmt / Rmc	PRESS
Rm @ BHT	0.08 @ 66.0
Time Since Circulation	9.75 HRS
Max Recorded Temp	66.00
Equipment Name	SUPER COMBO
Equipment / Base	1030 ROMA
Recorded By	J.KOKONAS
Witnessed By	A. HILL
WITNESS STOP	19:45/16-JAN

All interpretations are opinions based on inferences from electrical or other measurements and we cannot, and do not, guarantee the accuracy or correctness of any interpretations, and we shall not, except in the case of gross or wilful negligence on our part, be liable or responsible for any loss, costs, damages or expenses incurred or sustained by any interpretation made by any of our officers, agents or employees. These interpretations are also subject to our general terms and conditions in our price schedule.

MAIN LOG

Depth Based Data - Maximum Sampling Increment 10.0cm
 Plotted on 17-JAN-2002 13:30
 Recorded on 17-JAN-2002 05:33
 Filename: C:\Data\MAIN.dta
 System Configuration Dates: Logged : Plotted 04-DEC-2001:



MAIN LOG

Depth Based Data - Maximum Sampling Increment 10.0cm
 Plotted on 17-JAN-2002 13:30
 Recorded on 17-JAN-2002 05:33
 Filename: C:\Data\MAIN.dta
 System Configuration Dates: Logged : Plotted 04-DEC-2001:

COMPANY	SANTOS		
WELL	BUTTRISS 1		
FIELD	OTWAY		
PROVINCE/COUNTY	VICTORIA		
COUNTRY/STATE	SANTOS		
Elevation Kelly Bushing	50.50	First Reading	1709.60
Elevation Drill Floor	45.80	Depth Driller	1730.00
Elevation Ground Level		Depth Logger	1710.60

1:200
PDS CNS
GR

